

## Mission Statement

The Parker Youth & Sports Foundation is dedicated to the support and preservation of parks, sports facilities and athletic programs in the greater Yakima area.

## Honorary Directors

Chuck "Bobo" Brayton  
Joe Donahue (d)  
William (Bill) Faller  
Nancy Leahy  
Hazel Leland (d)  
Mel Lewis (d)  
Connie Little (d)  
Tom Parry  
Bill Pearl  
Pete Rademacher  
Stan Renecker  
Jerry Ryan  
Richard A. Smith  
Mel Stottlemire Sr.  
Willie Turner  
Judge John Nicholson (d)

## Board of Directors

(\*signifies charter member)

Jon Mulvenon  
President

Trudy Bray  
Vice-President

\*Nancy Kendrick  
Secretary

Chuck Hinckley  
Treasurer

Eric Carlson  
Spud Edmondson  
\*Bill Faller  
\*Carol Finney  
Sam Karr  
Jim Lust  
Steve Mitchell  
\*Daryl Parker  
\*Jerry Ward  
Betty Yaden

## Second Annual Holiday Open House

### Join Us For Goodies and Sharing Memories

The board of directors is again organizing an open house to share the holidays with you.

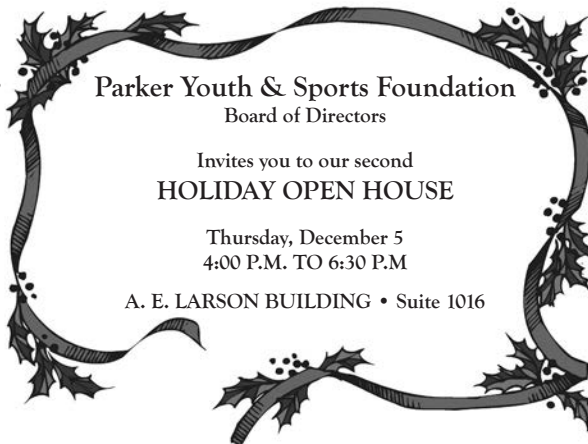
The holiday open house will provide all with an opportunity to visit with board members

and other youth activity and facilities enthusiasts while enjoying an array of photo memories as you sample a variety of holiday cookies, coffee and punch.

The location will again be on the **10<sup>th</sup> floor of the A. E. Larson Building** located at 2<sup>nd</sup> Street and E. Yakima Avenue – just follow the Jimmy John bread aroma.

Presentation of grant allocations will be made to several youth programs around 5 p.m. Drop in to see to whom your donations are making a difference.

Highlights from last year's event (see more photos on page 7):



2014 foundation President Jon Mulvenon reminiscing with Cowiche resident and former referee Jim Kemp and Nancy Leahy.



Current board members Spud Edmondson (left) and Sam Karr (right) enjoying time with former PYSF President Steve Dale.



YVCC crew with Millie Stenejhem, Kelly Robins and Nikki Hopkins.



Former coaches Bill Faller and Tom Parry discuss holiday stories with Lynn Ward.

A summary of the registration and financial documents of the PARKER YOUTH & SPORTS FOUNDATION is available by calling the Office of the Secretary of State (Washington State) at 1-800-332-4483 or by visiting their website: <http://www.secstate.wa.gov/charities/>.

## Letter from the President



Hello To All Parker Partners and Friends:

As we begin another year in our mission to support youth programs and athletic facilities in the valley, I would like to extend my personal thanks to Jerry Ward and on behalf of the Board express our appreciation to him for his three years of service as President of the Foundation. Jerry will continue on the Board with special interest in our historical files and collections.

November 1 we began our annual Parker Membership Drive. Invoices were mailed, and many have already been returned. Being a Parker Partner contributes to the operation of our office and programs throughout the year. To further assist this membership drive we ask that each Parker Partner get one additional friend to join PY&SF and help grow our foundation. "Each member add a friend."

December 5, 2013, we will hold our annual Holiday Open House. The event will allow for all Parker friends and members to visit with your board members: Jon Mulvenon, president; Trudy Bray, vice president; Nancy Kendrick, secretary; Chuck Hinckley, treasurer. We will have a supply of Christmas goodies to share. Also, we will have a great collection of sports events and heroes from the past on display. Come join us to start the holiday season!

We have also begun planning for our annual fundraiser, the Sport Legends Reunion banquet and High Hopes Tournament. The events will be held June 13 and 14 of 2014. As we all know, this event is a weekend of great fun. The funds raised are the major source of revenue for PY&SF supporting our ability to grow the foundation as well as support our mission statement.

The Faller/Brayton Endowment has grown to over \$240,000; it is directed to helping YVCC baseball and is now supporting other youth programs.

Our Grant Allocation Committee will now be chaired by Sam Karr. The foundation wants to encourage all Parker Partners to seek youth programs which would benefit by applying for grants. We have

a simple process that allows for support of 501 C (3) youth organizations. Please contact Sam Karr for assistance with the grant process. His contact information is on the grant application that can be found on our website at [www.parkeryouthfoundation.com](http://www.parkeryouthfoundation.com).

Thank you again, Jerry Ward, for three years of service as president of the foundation.

I look forward to visiting with everyone at the Holiday Open House.

Jon Mulvenon  
President

## Office Report

**PY&SF Website:** Check out the foundation's website – many updates, including the Sports Legends Reunion and High Hopes Tournament photos. The office would appreciate any comments.

**Park and Pop:** As a sponsor of the 3-On-3 Downtown Hotshots, the foundation is allotted one entry. Former President Jerry Ward decided to utilize the entry offering the spot to Lanette (Crosier) Hooper's fifth-grade team. The team did very well in its age division.. Team members were: Aaron Meza, Kaden Hooper, Deltay Riddick and Topher White.



Aaron Meza, Kaden Hooper, Deltay Riddick, Topher White

**Parker Partner Membership Drive:** 2013 Parker Partners received invoices for membership renewal November 1. If you would like to become a Parker Partner, you would be supporting the expenses of office rent, phone and internet. The general and memorial donations provide additional funds for grant allocations.

## Roll Call

### Parker Partners Renewal

We thank you for continuing to support the foundation for another year. Because of you, we can direct our fundraiser funds toward youth programs and facilities. As of November 25, the foundation has received \$2,585.00 with 137 Parker Partner renewals during its membership drive.

<i>Sally Allen</i>	<i>Ralph Holbrook</i>
<i>Bob &amp; Michele Alexander</i>	<i>Hop &amp; Mary Johns</i>
<i>Larry &amp; Kookie Amos</i>	<i>Bari &amp; Trina Johnson</i>
<i>Barb Amstutz</i>	<i>Eric &amp; Jill Johnson</i>
<i>Pat &amp; Colleen Andreotti</i>	<i>Dr. Linda Kaminski</i>
<i>Rich Austin</i>	<i>Sam Karr</i>
<i>Bill &amp; Adrienne Baker</i>	<i>Ed &amp; Mary Ann Kershaw</i>
<i>George Benedetti</i>	<i>Corky &amp; Judy Lewis</i>
<i>Dave Benedict</i>	<i>Eleanor Lewis</i>
<i>John Bloxom Jr.</i>	<i>Joe &amp; Kathy Mann</i>
<i>Andy &amp; Keely Boe</i>	<i>Dr. Robert McCulloch</i>
<i>Larry &amp; Deanna Book</i>	<i>Robert McCutcheon</i>
<i>Tracy Bray</i>	<i>Brenda Moore</i>
<i>Chuck &amp; Eileen Brayton</i>	<i>Mel &amp; Vicki Moore</i>
<i>Herb &amp; Jennifer Brayton</i>	<i>Jon &amp; Linda Mulvenon</i>
<i>Mike Broadhead</i>	<i>Julie Ward Osborne</i>
<i>Dan &amp; Carmel Burke</i>	<i>Daryl &amp; Sherrie Parker</i>
<i>Roger Campbell</i>	<i>Chris Pearson</i>
<i>Mike Carey</i>	<i>Mike &amp; Donna Perrault</i>
<i>Mike &amp; Carol Carlon</i>	<i>Doug &amp; Marjorie Peters</i>
<i>Eric Carlson</i>	<i>Pug &amp; Sharon Pinyard</i>
<i>Gene &amp; Denise Connor</i>	<i>Don Powell</i>
<i>Robert Cordova</i>	<i>Peter Rademacher</i>
<i>Don &amp; Shirley Crook</i>	<i>Holli Radke</i>
<i>Steve &amp; Cheryl Dale</i>	<i>Don Rasmussen</i>
<i>Larry &amp; Pat Danielson</i>	<i>Glenn Rasmussen</i>
<i>John Davidson</i>	<i>Stanley Renecker</i>
<i>Al &amp; Pat Deatley</i>	<i>Michael &amp; Jane Schwab</i>
<i>Bill &amp; Sally Douglas</i>	<i>Michael &amp; Lynda Sissom</i>
<i>Joe &amp; Laura Drovetto</i>	<i>Elaine &amp; Sid Smith</i>
<i>Spud &amp; Gay Edmondson</i>	<i>Bob &amp; Bernice Spain</i>
<i>Richard Elliott</i>	<i>Ken &amp; Millie Stenehjem</i>
<i>Al Endriss</i>	<i>Mel Stottlemire</i>
<i>Engravings Unlimited</i>	<i>Melba Strand</i>
<i>Bill Faller</i>	<i>Liggett Taylor</i>
<i>Tom &amp; Karen Garrison</i>	<i>Christopher Turner</i>
<i>Jay Gilbertson</i>	<i>Eileen Walen</i>
<i>Jeff Girard</i>	<i>Amanda Ward</i>
<i>William Halpin</i>	<i>Jeff Ward</i>
<i>Fred &amp; Marie Halverson</i>	<i>Jerry Ward</i>
<i>Ron &amp; Heide Hamamoto</i>	<i>Jessica Gene Ward</i>
<i>Gary Hansen</i>	<i>Verne Welo</i>
<i>Harley &amp; Linda Hansen</i>	<i>Gerald Wilson</i>
<i>Virginia Hays</i>	<i>Betty Yaden</i>
<i>Tom &amp; Mary Herche</i>	<i>James Yearout</i>
<i>Tom Hinman</i>	
<i>Gerry &amp; Mary Holder-</i>	
<i>Marsh</i>	

## General Donations

Thank you for your additional donation during the Parker Partner Membership Drive. A special thank you to Dave Benedict, who is making a monthly contribution.

<i>Dave Benedict</i>	<i>Ron &amp; Heide Hamamoto</i>
<i>John Bloxom Jr.</i>	<i>Harley &amp; Linda Hansen</i>
<i>Roger Campbell</i>	<i>Don Powell</i>
<i>Gene &amp; Denise Connor</i>	<i>Don Rasmussen</i>
<i>Richard "Dick" Elliott</i>	<i>Christopher Turner</i>
<i>William Halpin</i>	

### Memorials

Thank you to everyone who has donated in remembrance of those we have lost. The foundation has received \$2,170.00 during the past four months.

In memory of **Betty Carlson**, loving mother of three and an active member of the Woman's Century Club, the Republicans Women's Club, and she enjoyed hosting a Super Bowl party each year.



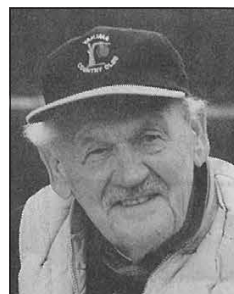
*Spud & Gay Edmondson*

In memory of **Hazel Leland**, educator and local and state golf and bowling champion. Hazel was the 2008 Honored Guest for the Sports Legends Reunion.



*Ken & Millie Stenehjem*

In memory of **Rodney MacIntosh**, a native of the Yakima Valley. He was an avid outdoorsman and played the bagpipes for numerous weddings and funerals. The foundation's inaugural High Hopes Tournament found Rodney out on the SunTides Course entertaining the golfers with the "Call to the Carts."



*Bill Faller*

In memory of **Walter Schlagel**, born and raised in Yakima. Walt was an outstanding shortstop and would become a baseball coach. He also coached his daughter's adult slo-pitch team. Walter was involved in the fruit industry and was a Christian.



*Bill Faller*  
*Virginia Hays*

*Jon & Linda Mulvenon*  
*Jerry Ward*

*Continued on page 4*

In memory of **Jerry Ryan**, raised in Matson, WWII Navy veteran, Washington Junior High and Davis High School physical education educator and football, basketball and baseball referee. Davis Pirate No. 1 Fan.



*Thomas & Elizabeth*

*Daily Family*

*Frank & Suzanne Bacon*

*Dodson Family Trust*

*Hal & Joy Dodeward*

*Rhonda & Bill Dolsen*

*Spud & Gay Edmondson*

*Bill Faller*

*Virginia Hays*

*Jacqueline Lake*

*James & Karen Meredith*

*Jon & Linda Mulvenon*

*James & Bonnie Pepple*

*Marvin & Ann Pepple*

*James & Marilyn Ryan*

*Tom & Lorraine Ryan*

*Will & Edith Ryan*

*Jerry & Lynn Ward*

## Joe Donahue Memorial Scholarship

We appreciate those who continue to remember Slo-Pitch Joe as we provide a scholarship opportunity to a YVCC student.

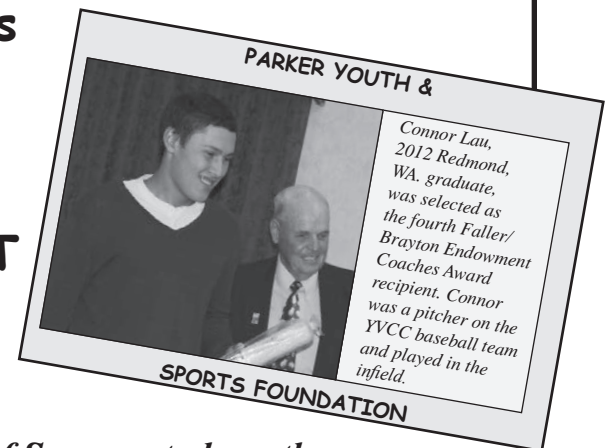


*Bari & Trina Johnson*

*Happy Holidays!*



## Happy Holidays From the FALLER/BRAYTON ENDOWMENT



*“Join the Boys of Summer to keep the games going for Yakima youth.”*

In just five years the Parker Youth & Sports Foundation has seen the Faller/Brayton Endowment grow to over \$240,000 with three distributions back to the Foundation in 2010-13 of over \$13,000. The endowment is growing day by day, thanks to the generous donations of our Parker Partners and Friends. We ask that you join us in our annual fund drive to enhance the Faller/Brayton Endowment. The objectives of the Endowment mirror the basic mission of the PY&SF.

### Faller/Brayton Endowment Directives:

1. To provide a Northwest Athletic Association of Community College scholarship (the Coaches Award) for a returning (sophomore) baseball player at YVCC.
2. To contribute to the preservation and/or improvement of Parker Field.
3. To provide participation scholarships for young athletes desiring to play on local youth teams.
4. To provide assistance in the development or improvement of existing sports fields or facilities in the greater Yakima area.
5. To support other charitable objectives that fall within the mission of the Parker Youth & Sports Foundation.
6. To provide assistance in the development or improvement of existing sports fields or facilities in the greater Yakima area.
7. To support other charitable objectives that fall within the mission of the Parker Youth & Sports Foundation.

## Historical Section

### The Leahys of Yakima Our First Family of Sports

More than sports trivia, this column relates to college football lore and legend with deep roots right here in Yakima. But the trivia itself is pretty good: Name a family with members that played for three different Hall of Fame coaches at Notre Dame. Parker Partners Jim and Nancy Leahy provide the Yakima connection and answer to this question. Jim's father was Frank Leahy, legendary Notre Dame coach whose teams won four national championships in the 1940s. Frank Leahy played for Knute Rockne (1928-30) as a 190-pound lineman, Jim Leahy played for Ara Parseghian (1965-69) as a 235-pound lineman, and Ryan Leahy played for Lou Holtz (1991-95) as a 300-pound lineman.

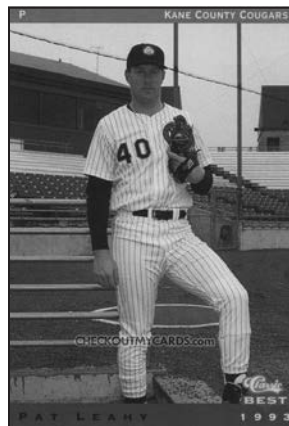
Jim and Nancy Leahy have certainly made their mark in Yakima, ranging from a multi-year span of watching their children's athletic performances at Eisenhower High School and at Beetles baseball games, to Nancy in all of her community involvement and on to Jim's many years as a supporter of youth programs and longstanding member of the Yakima Monday Morning Quarterbacks Club, of which he is a past president.

Jim and Nancy first met during their senior year at Lake Oswego High School in 1964 and were married in 1969 after Jim graduated from Notre Dame and Nancy from "nearby" Purdue. Their children (Patrick, Ryan and Regan) were born in Kennewick and, to Yakima's benefit, the family moved here in 1980. Jim was a corrugated-sales manager for 40 years while at the same time supporting such youth sports programs as Grid Kids, Little League baseball and YMCA basketball, as well as serving as president of the Quarterbacks Club. As his friends know, he has spent an inordinate amount of volunteer time trying to keep up with Nancy and her public-service activities.

The Parker Youth & Sports Foundation has made many decisions in support of a number of youth programs since its inception in 2004, but there is little doubt that one of the best decisions the founding members made was to recruit Nancy Leahy to serve on the first PY&SF board and to be the organization's first treasurer. Her leadership in those early days was invaluable, and her accounting and organizational procedures remain the foundation of our operations today. After leaving the board in 2007, she was named an honorary director of the Parker group. Public service and support of youth sports programs go hand in hand with Nancy, while at the same time she continues her professional career as executive director

of Yakima Valley Hearing and Speech Center. Yakima Youth Baseball, the Yakima School District, the Ike Boosters, KYVE Advisory Board, the Yakima Rotary and the chamber of commerce are a few Valley organizations that have benefitted from Nancy's leadership and special expertise.

**Patrick, Ryan and Regan:** The Leahy "kids" cut a memorable path through high school sports while attending Eisenhower before all three earned Division I athletic scholarships, two at Notre Dame.



*Pat playing with the Kane County Cougars.*

Pat playing with the Kane County Cougars. Pat went on to pitch at Notre Dame, where he graduated in 1995 with a degree in economics. He was drafted by the Florida Marlins in 1992 and played professionally until 1997. He received an MBA Degree from Foster School of Business/University of Washington. Living in Yakima, he and his wife LeAnn have two children.

**Ryan,** Ike class of 1991, was an all-state lineman but could be best remembered for his regional-record shooting perfection in basketball when he was 12-for-12 from the field and 3-for-3 from the free-throw line for 27 points in a regional-tournament upset of Spokane champion Ferris. Then it was on to Notre Dame for an amazing career that included team captain his junior and senior years and third-team AP All-American honors his senior year as an offensive lineman. He graduated in 1995 with a degree in economics. His MBA Degree is from Kellogg School of Management/



*Pat with his son's grid kid team.*

Northwestern University of Chicago. He lives in Wilmette, Ill., with his wife Becky and two children.



*All American Ryan Leahy at Notre Dame in 1995.*



*Regan Leahy*

**Regan**, Ike class of 1995, was ASB president and a three-sport star, earning all-state honors in volleyball, setting a school record in the shot put, and playing basketball. She attended the University of North Carolina and earned four letters in track and field while

receiving the Atlantic Coast Conference Top Six Award in 1998 and 1999 as recognition for community service, leadership and athletic achievement. She graduated from UNC in 1999 with a degree in communications and psychology. She lives in Chicago with husband Sam and one child.

**The Leahy Legacy:** Francis William Leahy was born in 1908 at O'Neill, Neb. He married Florence Victoria Reilly in 1935, and they had eight children. Frank died in 1973 and Florence in 1977.

Frank gave up a boxing career to attend Notre Dame, where he played on the last three teams of legendary coach Knute Rockne. After graduation in 1930, Leahy went to Georgetown University as line coach in 1931 and to Michigan State the following year to take a similar position. Leahy took over as line coach at Fordham University in 1933 and stayed until 1938 under Jim Crowley, coaching the famed Seven Blocks of Granite from



*Coach Frank Leahy (hat on) at Notre Dame.*

1935 to 1937, when the Rams lost only two games in three seasons. The undersized right guard on the 1935 and 1936 teams was future coaching legend Vince Lombardi. In 1939, Leahy went to Boston College as head coach, guiding the Eagles to a 20-2 record, including an undefeated 1940 season capped off with a win in the 1941 Sugar Bowl.

He was hired at Notre Dame in 1941 and coached three seasons before serving in the Navy during World War II and returned to his alma mater from 1946 to 1953. He compiled a career college record of 107-13-9. His winning percentage of .854 is the second-best in NCAA Division I football history, trailing only that of his former coach Rockne. Coach Leahy played on two Notre Dame teams that won national championships in 1929 and 1930 and coached four more national champions in 1943, '46, '47 and '49.

In retirement, he moved to Portland in 1964, bringing part of his family to the Northwest.

In conclusion, we express our gratitude to the Leahy family for their support of the PY&SF, so let's hear it with the Victory March; unarguably the most recognized college fight song in the country:

Cheer, cheer for old  
Notre Dame,  
Wake up the echoes  
cheering her name,  
Send a volley cheer  
on high,  
Shake down the  
thunder from the sky.  
What though the odds  
be great or small  
Old Notre Dame will  
win over all,  
While her loyal sons  
are marching  
Onward to victory.



*Parker Partners Jim and Nancy Leahy and Bob Garretson.*

## 2013 Holiday Open House Memories, continued

7



*First Annual Holiday recipients of a grant.*



*Bob McCutcheon and Millie Stenejhen (YVCC retired staff) with Jim Scoggins.*



*Spud Edmondson with Mike Broadhead (Central Valley Bank), and Jon Mulvenon*



**See you at our fundraising weekend  
June 13-14, 2014!**

### *The Lore of Notre Dame*

*New York Herald Tribune, 18 October 1924*

**By Grantland Rice**

Outlined against a blue-gray October sky, the Four Horsemen rode again. In dramatic lore they are known as Famine, Pestilence, Destruction and Death. These are only aliases. Their real names are Stuhldreher, Miller, Crowley and Layden. They formed the crest of the South Bend cyclone before which another fighting Army football team was swept over the precipice at the Polo Grounds yesterday afternoon as 55,000 spectators peered down on the bewildering panorama spread on the green plain below.



# YES!

I want to support parks, youth activities  
and sports with a donation to the  
Parker Youth & Sports Foundation.

### I wish to contribute:

- ☐ Parker Partner Individual Membership @ \$25 per year    ☐ \$40 Joint
- ☐ General Foundation
- ☐ The Joe Donahue Scholarship Fund
- ☐ Faller/Brayton Endowment
- ☐ In Memory of \_\_\_\_\_ Amount \$ \_\_\_\_\_
- ☐ Please send information about the **June 13 Sports Legends Reunion** and **June 14 High Hopes Tournament**

### Special Areas:

- ☐ Parks & Playfields
- ☐ Youth Sports Programs
- ☐ Scholarship
- ☐ History of Area Sports

### Payment Method: Check enclosed    Bill my credit card: We accept: Visa    MasterCard

Credit Card #

--	--	--	--	--	--	--	--	--	--	--	--	--	--	--	--	--	--	--	--

Exp. \_\_\_\_ / \_\_\_\_ / \_\_\_\_

--	--	--	--

Signature \_\_\_\_\_ V-CODE \_\_\_\_\_

Name \_\_\_\_\_ Business \_\_\_\_\_

Address \_\_\_\_\_ City \_\_\_\_\_ State \_\_\_\_\_ Zip \_\_\_\_\_

Phone: H \_\_\_\_\_ B \_\_\_\_\_ E-Mail \_\_\_\_\_

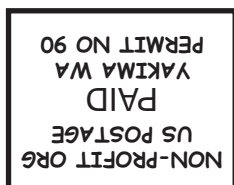
The Parker Youth & Sports Foundation is a 501 (c) (3) Foundation. Thank you for your tax-deductible donation.

Contact information    Phone: 509-469-9336

E-Mail: [info@parkeryouthfoundation.com](mailto:info@parkeryouthfoundation.com)

Web site: [www.parkeryouthfoundation.com](http://www.parkeryouthfoundation.com) or  
[www.parkeryouthandsportsfoundation.org](http://www.parkeryouthandsportsfoundation.org)

POSTAL CUSTOMER



RETURN SERVICE REQUESTED

Parker Youth & Sports Foundation  
P.O. Box 1311  
Yakima, Washington 98907